

Engine output: **31.1 PS**
Machine weight: **3520 kg**

For Earth, For Life
Kubota

KUBOTA MINI EXCAVATOR

KX101-3a4



With smooth simultaneous operation, powerful digging force, and outstanding attachment versatility, this excavator brings high performance to a whole new level.

Load Sensing Hydraulic System

Kubota's improved 1-pump load sensing hydraulic system ensures smoother operation, regardless of load size. It allows hydraulic oil to flow according to the specific range of the operator's lever motion.

Strong digging force

A well-balanced arm and bucket guarantee superior digging force whenever you need it. The KX101-3 α 4 delivers an impressive bucket digging force. Its powerful and well-balanced arm and bucket allow the operator to finish the work more effectively.

Auto shift

The auto shift system enables automatic travel shift between high and low depending on traction effort and terrain. This gives smoother operations when dozing and turning.



KUBOTA MINI EXCAVATOR KX101-3α4

Adjustable maximum oil flow on auxiliary circuit

The maximum oil flow rate of the auxiliary circuit can be changed/adjusted by simply pushing a switch—there's no need for additional tools. This simplifies the utilisation of front attachments like tilt buckets, brush cutters and hydraulic hammers—you can reduce or increase the flow to get just the right amount of control.

**The maximum oil flow can vary according to the load of front attachments.*



4 tie-down points

Tie-down brackets provide you with accessible security and easy transport.

ROPS/FOPS (level 1) cabin and canopy

The cabin and canopy offer maximum safety to the operator with their Roll-over Protection Structure (ROPS) and Falling Object Protection Structure (FOPS).

Reliable machine stability

Kubota's excavators are designed and engineered to deliver a level of machine stability that's second to none. The outstanding balance of the KX101-3α4 allows it to carry heavy loads easily and smoothly.

More driving force

A stronger driving force of the travel motor and improved turnability enable smooth dozer backfilling and levelling operation.

Kubota delivers security and operating ease, thanks to a host of advanced features.

KUBOTA ORIGINAL ANTI-THEFT SYSTEM

Your KX101-3α4 is protected by Kubota's industry-leading anti-theft system. Only programmed keys will enable the engine to start up. Attempting to start with an un-programmed key will activate the alarm. Its features include an alert to remind the operator to extract the key after operation, and an LED to alert potential thieves that the system is activated.

Protected by KUBOTA
ANTI-THEFT
SYSTEM



The red programming key programmes the individual keys. The individual black keys start the engine.

■ Programmed key



Insert key



The excavator moves



1 Insert the Red programming key, then press the monitor button.

■ Un-programmed key



Insert key



The alarm sounds



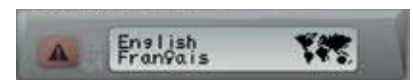
2 Insert new individual Black operational key.



DIGITAL PANEL



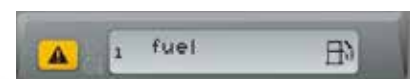
Informative, interactive and functional. Kubota's Intelligent Control System keeps you in tune of the KX101-3α4's vital signs. It accurately displays easy-to-understand diagnostics of current working conditions and warning indicators for engine rpm and hour meter, as well as for fuel, temperature and oil levels. When filling up with fuel, our panel also informs the operator that the tank is nearly full, and alerts the operator when routine maintenance is due. Overall, the panel reduces excavator downtime and repair fees for a decrease in total operating costs.



Language selection display



Information when service is required



Low fuel display

EASY OPERATION

1 AUX oil flow with proportional flow control

Thumb-operated switches provide quick and easy proportional flow control for AUX1 (Std) and AUX2 (Opt). The round switch on the left lever permits easy switching between AUX2 and the boom swing function.

**For standard model, boom swing can be controlled by foot pedal on the floor.*



Left control lever



Right control lever

2 Constant oil flow switch

Any attachment that requires a constant oil flow, this ON/OFF press switch enables a simple operation.

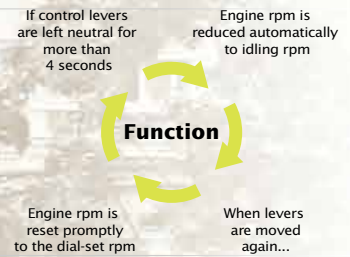


3 2-speed switch

The advanced 2-speed travel switch allows user-friendly travel speed changes, improved operation, comfort and control.

4 Auto Idling system (AI)

Whenever high engine rpm isn't needed, this system automatically reduces the engine to idling rpm, and revs it back to its original setting when work resumes. This helps to reduce noise and exhaust emissions, and saves on fuel, energy and running costs.



With Kubota excavators, maintenance is simple and quick, so you can work more efficiently.

Engine inspection

Primary points, like the engine and air cleaner, can be inspected and maintained easily via the rear engine cover. The fuel filter and water separator are independently installed and both are located inside the strong and durable steel-plated bonnet, which opens widely for quick inspection and routine maintenance. An engine inspection window is also located behind the seat for easier access to the engine's injection nozzles.



Kubota engine

Kubota's unique E-TVCS (Three Vortex Combustion System) with 31.1 PS enables high-energy output, low vibration and low fuel consumption, while minimising exhaust emissions.

Control valve inspection

A quick and easy inspection of the control valve is possible simply by opening the latch on the bonnet, located to the right of the cabin. When more detailed maintenance or repairs are required, the remaining panels on the swing frame can be easily removed using standard tools.



Swivel negative brake

With swivel negative brake, the swivel function is locked automatically whenever the engine is stopped or the pilot control safety lever is raised. This feature eliminates the need for a swivel transport lock pin.

Two-piece hose design

The two-piece hose design on the dozer and boom cylinders reduces hose replacement time by 60% compared to non-joint types. What's more, this design virtually eliminates the need to enter the machine for maintenance.

Front attachment/bushed pin

To maximise durability, we've introduced bushings on all of the pivot points on the front attachment and connecting points on the swing bracket. Kubota even uses bushings on the swing bracket's fixed joints—between the pin and the boss—to prevent potential damage caused by shock and vibration over many years of use. This minimises attachment play and helps maintain operating precision for a long time.



Standard Equipment

Engine/Fuel system

- Double element air cleaner
- Electric fuel pump
- Auto idling system

Cabin

- ROPS (Roll-over Protective Structure, ISO3471)
- FOPS (Falling Object Protective Structure) Level 1
- Weight-adjustable full suspension seat
- Seatbelt
- Hydraulic pilot control levers with wrist rests
- Travel levers with foot pedals
- Cabin heater for defrosting & demisting
- Emergency exit hammer
- Front window power-assisted with 2 gas dampers
- 12 V power source for radio-stereo
- Location for 2 speakers and radio aerial
- Cup holder

Undercarriage

- 300 mm rubber track
- 1 x upper track roller
- 4 x outer flange-type lower track roller
- 2 speed travel switch on dozer lever

Canopy

- ROPS (Roll-over Protective Structure, ISO3471)
- FOPS (Falling Object Protective Structure) Level 1
- Weight-adjustable full suspension seat
- Seatbelt
- Hydraulic pilot control levers with wrist rests
- Travel levers with foot pedals

Hydraulic system

- Adjustable maximum oil flow on auxiliary circuit
- Pressure accumulator
- Hydraulic pressure checking ports
- Straight travel circuit
- Third line hydraulic direct return for AUX
- Proportional auxiliary switch (AUX1) on right control lever

Safety system

- Anti-theft system
- Engine start safety system on the left console
- Travel lock system on the left console
- Swivel lock system
- Boom anti-fall circuit in the control valve
- Tie-down brackets

Working equipment

- 1350 mm arm
- Auxiliary hydraulic circuits piping to the arm end
- 2 working lights on cabin and 1 light on the boom

Optional Equipment

Working equipment

- 1550 mm arm

Undercarriage

- 300 mm steel track (+ 95 kg)

Cabin

- Radio/stereo installation kit
- Air conditioning

Safety system

- Anti-fall valve unit (boom, arm, dozer)
- Warning buzzer

Hydraulic system

- Proportional auxiliary switch (AUX2) on left control lever
- Oil flow adjustment dial for AUX2

Others

- Special paint upon request

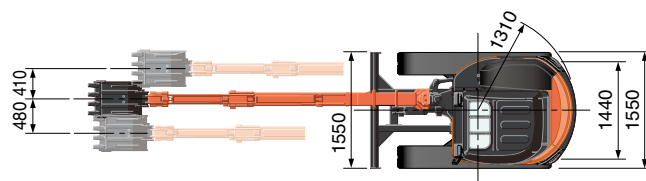
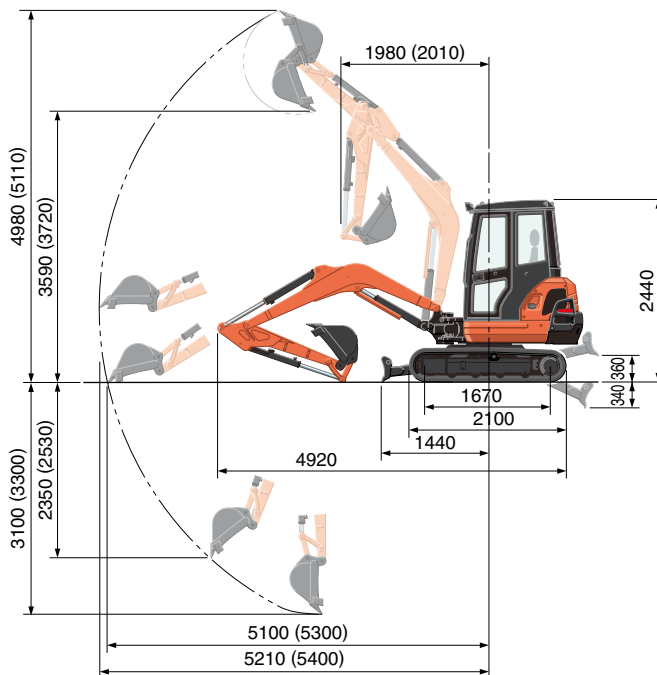
SPECIFICATIONS

*With rubber shoe type

| | | | |
|--------------------------------|---------------------|---------------------------------------|--------------|
| Model | | KX101-3α4 | |
| Machine weight | Cabin | kg | 3520 |
| | Canopy | kg | 3410 |
| Bucket capacity, std. SAE/CECE | | m ³ | 0.107/0.093 |
| Bucket width | With side teeth | mm | 575 |
| | Without side teeth | mm | 550 |
| Model | | D1803-M-E3-BH-EU1 | |
| Type | | Water-cooled, diesel engine E-TVCS | |
| Engine | Output ISO9249 | PS/rpm | 31.1/2300 |
| | | kW/rpm | 22.9/2300 |
| | Number of cylinders | | 3 |
| | Bore × Stroke | mm | 87 × 102.4 |
| Displacement | | cc | 1826 |
| Overall length | | mm | 4920 |
| Overall height | Cabin | mm | 2440 |
| | Canopy | mm | 2440 |
| Swivelling speed | | rpm | 8.9 |
| Rubber shoe width | | mm | 300 |
| Tumbler distance | | mm | 1670 |
| Dozer size (width x height) | | mm | 1550 x 335 |
| Hydraulic pump | P1 | Variable displacement pump | |
| | Flow rate | ℓ/min | 96.6 |
| | Hydraulic pressure | MPa (kgf/cm ²) | 24.5 (250.0) |
| Max. digging force | Arm | kN (kgf) | 15.9 (1630) |
| | Bucket | kN (kgf) | 31.1 (3180) |
| Boom swing angle (left/right) | | deg | 80/50 |
| Auxiliary circuit (AUX1) | Flow rate | ℓ/min | 55 |
| | Hydraulic pressure | MPa (kgf/cm ²) | 20.6 (210) |
| Auxiliary circuit (AUX2)* | Flow rate | ℓ/min | 28 |
| | Hydraulic pressure | MPa (kgf/cm ²) | 20.6 (210) |
| Hydraulic reservoir | | ℓ | 36 |
| Fuel tank capacity | | ℓ | 48 |
| Max. travelling speed | Low | km/h | 3.0 |
| | High | km/h | 4.6 |
| Ground contact pressure | Cabin | kPa (kgf/cm ²) | 32.3 (0.33) |
| | Canopy | kPa (kgf/cm ²) | 31.4 (0.32) |
| Ground clearance | | mm | 290 |

* Option

WORKING RANGE



(): Long Arm Unit
Unit: mm

LIFTING CAPACITY

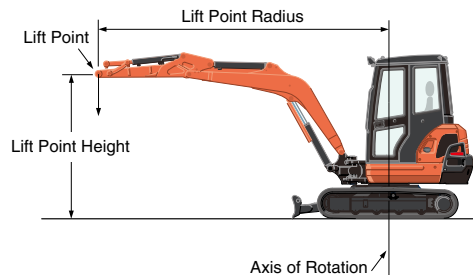
*With cabin, rubber shoe and standard arm
kN (ton)

| Lift Point Height | Lifting point radius (min.) | | | Lifting point radius (3m) | | | Lifting point radius (max.) | | |
|-------------------|-----------------------------|-------------|-------------|---------------------------|------------|------------|-----------------------------|------------|------------|
| | Over-front | | Over-side | Over-front | | Over-side | Over-front | | Over-side |
| | Blade Down | Blade UP | | Blade Down | Blade UP | | Blade Down | Blade UP | |
| 3m | - | - | - | 5.7 (0.58) | 5.7 (0.58) | 5.7 (0.58) | - | - | - |
| 2m | - | - | - | 7.2 (0.74) | 7.2 (0.74) | 7.2 (0.74) | - | - | - |
| 1m | - | - | - | 9.5 (0.97) | 9.1 (0.93) | 7.5 (0.77) | 6.2 (0.63) | 5.4 (0.55) | 4.5 (0.46) |
| 0m | - | - | - | 10.9 (1.11) | 8.8 (0.89) | 7.2 (0.74) | - | - | - |
| -1m | 16.2 (1.65) | 16.2 (1.65) | 16.2 (1.65) | 10.6 (1.08) | 8.7 (0.88) | 7.1 (0.73) | - | - | - |
| -2m | - | - | - | 7.3 (0.74) | 7.3 (0.74) | 7.3 (0.74) | - | - | - |

Please note:

* The lifting capacities are based on ISO 10567 and do not exceed 75% of the static tilt load of the machine or 87% of the hydraulic lifting capacity of the machine.

* The excavator bucket, hook, sling and other lifting accessories are not included on this table.



* Working ranges are with Kubota standard bucket, without quick coupler.

* Specifications are subject to change without notice for purpose of improvement.

KUBOTA EUROPE S.A.S.

19 à 25, rue Jules Verceyryse
Zone Industrielle - B.P. 50088
95101 Argenteuil Cedex France
Téléphone : (33) 01 34 26 34 34
Télécopieur : (33) 01 34 26 34 99

KUBOTA (U.K.) LTD

Dormer Road, Thame, Oxfordshire,
OX9 3UN, U.K.
Phone : 01844-268140
F a x : 01844-216685

KUBOTA Baumaschinen GmbH

Steinhauser Straße 100
D-66482 Zweibrücken Germany
Telefon : (49) 0 63 32 - 487 - 312
F a x : (49) 0 63 32 - 487 - 101