

## Specifications | Splitters

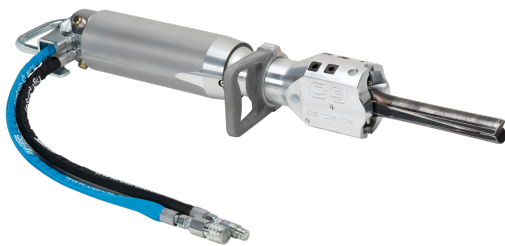
Type	Wedge set	Required drill hole diameter <sup>1</sup>	Minimum drill depth	Splitting distance	Splitting force, theoretical	Splitting force, effective	Weight <sup>3</sup>	Length Splitting Cylinder	Length wedge set	Article no.
		mm	mm	mm	kN / t	kN / t	kg	mm	mm	
C2S	N	31 - 32	270	9	3490 / 355	1913 / 195	17	745	140	8381 0402 10
C4E	N	35 - 36	430	10	4524 / 461	2256 / 230	21	995	250	8381 0406 25
C4E	WL	35 - 38	540	14	3267 / 333	1864 / 190	22	1145	400	8381 0406 40
C9	N	45 - 48	410	18 - 53 <sup>2</sup>	2995 / 305	1962 / 200	22	1020	230	8381 0409 00
C9	L	48 - 50	580	18 - 53 <sup>2</sup>	2995 / 305	1962 / 200	23	1190	400	8381 0409 40
C12	N	45 - 48	610	19 - 60 <sup>2</sup>	6061 / 618	3507 / 358	31	1290	380	8381 0412 38
C12	L	45 - 48	680	15 - 44 <sup>2</sup>	8082 / 824	4048 / 413	32	1360	450	8381 0412 45
C12	W	45 - 48	550	24 - 80 <sup>2</sup>	4849 / 494	3150 / 321	31	1250	340	8381 0412 50

<sup>1</sup> Smallest diameter is most effective<sup>2</sup> With one enlarging counter wedge and one special enlarging counter wedge<sup>3</sup> Without hydraulic hoses

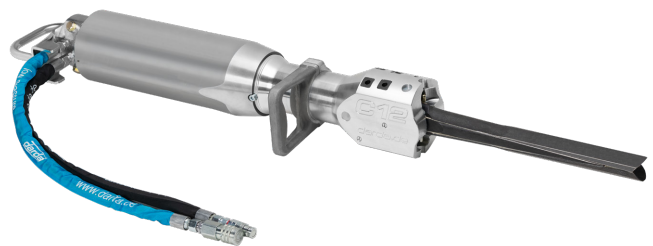
C2S



C4E



C9



C12

## Specifications – Enlarging counter wedges

Type	Enlarging counter wedges Article no.	Special enlarging counter wedges Article no.
C4E N	3390 0141 03	–
C9 N	3390 0246 11	3390 0246 21
C9 L	3390 0246 31	3390 0246 51
C12 N	3390 0236 00	3390 0280 00
C12 L	3390 0236 21	3390 0280 21
C12 W	3390 0236 11	3390 0280 11

## Specifications | Special Lubricant

Quantity/container	Article no.	
1 kg	3391 0942 00	Hazardous material
18 kg	3391 0980 50	Hazardous material

## Specifications | Hydraulic hoses

Type	Length <sup>1</sup> mm	Number of Splitters	Article no.
S1	10	1	8381 0504 02
S1	20	1	8381 0504 03
S2	10	2	8381 0504 10
S2	20	2	8381 0504 11
S3	20	3	8381 0504 29

<sup>1</sup> Distance between Power Unit and Splitter

## Specifications – Pressure shells

Suitable for	Required drill hole diameter mm	Minimum drill depth mm	Article no.
C9 N	100	410	3390 0357 00
C12 N/W	100	610	3390 0429 00