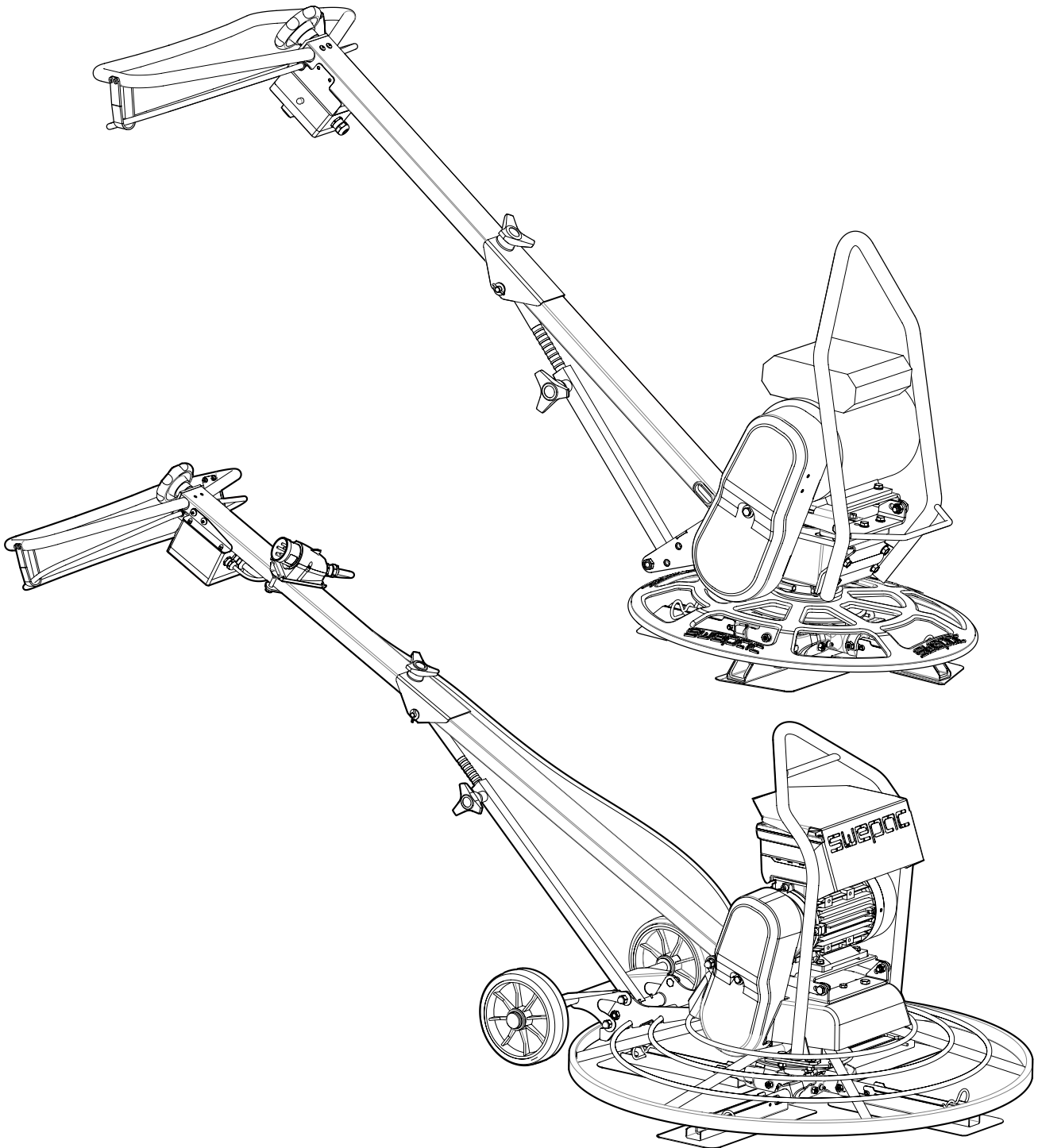


SWEPAC

TR 600E
TR 750E
TR 950E

USER MANUAL IN ORIGINAL



CONTENTS

SAFETY INSTRUCTIONS.....	3
OPERATION, PRECAUTIONS.....	3, 4, 5, 6
TRANSPORT, PRECAUTIONS	6
MAINTENANCE, PRECAUTIONS.....	6
TECHNICAL DATA.....	7
DESCRIPTION.....	8
SIGNS.....	9
DESCRIPTION MOTOR AND ELECTRIC SYSTEM.....	10
REGULAR CHECKS.....	10
START AND STOPP	11
OPERATING	11; 12; 13
LIFTING AND TRANSPORTATION.....	14
DIMENSION.....	15
TROUBLESHOOTING TR750E / TR950E....	16; 18
WIRING DIAGRAM TR750E / TR950E.....	17
STORAGE AND DISPOSAL.....	19
NOTES.....	19; 20; 21; 22
EC-DECLARATION OF CONFORMITY.....	23

SAFETY INSTRUCTIONS

To reduce the risk of serious injury or death to yourself or others read and understand the Safety and operating instruction before installing, operating, repairing, maintaining, or changing accessories on the machine.

Post this Safety and operating instruction at work locations, provide copies to employees, and make sure that everyone reads the Safety and operating instruction before operating or servicing the machine.

In addition, the operator or the operator's employer must assess the specific risks that maybe present as a result of each use of the machine.

Additional instructions for the engine can be found in the manufacturer's engine manual.

Personal precautions and qualifications

Only qualified and trained persons may operate or maintain the machine. They must be physically able to handle the bulk, weight, and power of the machine. Always use your common sense and good judgement.

Personal protective equipment

Always use approved protective equipment. Operators and all other persons in the working area must wear protective equipment, including at a minimum:

- Protective helmet
- Hearing protection
- Impact resistant eye protection with side protection
- Respiratory protection when appropriate
- Protective gloves
- Proper protective boots
- Appropriate work overall or similar clothing (not loose-fitting) that covers your arms and legs.

Drugs, alcohol or medication

Drugs, alcohol or medication may impair your judgment and powers of concentration. Poor reactions and incorrect assessments can lead to severe accidents or death.

Never use the machine when you are tired or under the influence of drugs, alcohol or medication.

OPERATION, PRECAUTIONS

DANGER Explosion hazard

If a warm machine or exhaust pipe comes into contact with explosives, an explosion could occur. During operating with certain materials, sparks and ignition can occur. Explosions will lead to severe injuries or death.

Never operate the machine in any explosive environment.

Never use the machine near flammable materials, fumes or dust.

Make sure that there are no undetected sources of gas or explosives.

Avoid contact with the warm exhaust pipe or the bottom of the machine.

DANGER Fire hazard

If a fire starts in the machine, it can cause injury.

If possible use an ABE-class powder extinguisher, otherwise use a BE-type carbon dioxide fire extinguisher.

DANGER Fuel hazard

The fuel is flammable and fuel fumes can explode when ignited, causing serious injury or death.

Protect your skin from contact with the fuel. If fuel has penetrated the skin, consult a qualified health professional.

Never remove the filler cap, or fill the fuel tank when the machine is hot.

Fill the fuel tank outdoors or in a clean and well ventilated place, free from sparks and open flames. Fill the fuel tank at least ten meters (30 feet) from the place where the machine is to be used.

Release the filler cap slowly to let pressure escape.

Never over fill the fuel tank.

Make sure the filler cap is screwed on when the machine is used.

Avoid spilling fuel on the machine, wipe off any spilled fuel.

Check regularly for fuel leaks. Never use the machine if it is leaking fuel.

Never use the machine in the proximity of material that can generate sparks. Remove all hot or spark-generating devices before starting the machine.

Never smoke when filling the fuel tank or when working with the machine or servicing it.

Only store fuel in a container that is specially constructed and approved for the purpose.

Consumed fuel and oil containers must be taken care of and returned to the retailer.

Never use your fingers to check for fluid leaks.

WARNING Unexpected movements

The machine is exposed to heavy strains during operation. If the machine breaks or gets stuck, there may be sudden and unexpected movement that can cause injuries.

Always inspect the machine prior to use. Never use the machine if you suspect that it is damaged.

Make sure that the handle is clean and free of grease and oil.

Keep your feet away from the machine.

Never sit on the machine.

Never strike or abuse the machine.

Pay attention and look at what you are doing.

WARNING Dust and fume hazard

Dusts and /or fumes generated or dispersed when using the machine may cause serious and permanent respiratory disease, illness, or other bodily injury. Some dusts and fumes created by compaction work contain substances known to cause respiratory disease, cancer, birth defects, or other reproductive harm.

Dust and fumes in the air can be invisible to the naked eye, so do not rely on eye sight to determine if there is dust or fumes in the air. To reduce the risk of exposure to dust and fumes, do all of the following:

Perform site-specific risk assessment. The risk assessment should include dust and fumes created by the use of the machine and the potential for disturbing existing dust.

Wear, maintain and correctly use respiratory protection as instructed by your employer and as required by occupational health and safety regulations. The respiratory protection must be effective for the type of substance at issue (and if applicable, approved by relevant governmental authority).

Work in a well ventilated area.

If the machine has an exhaust, direct the exhaust so as to reduce disturbance of dust in a dust filled environment.

Operate and maintain the machine as recommended in the operating and safety instructions.

Wear washable or disposable protective clothes at the worksite, and shower and change in to clean clothes before leaving the work site to reduce exposure of dust and fumes to your self, other persons, cars, homes, and other areas.

Avoid eating, drinking, and using tobacco products in areas where there is dust or fumes.

Wash your hands and face thoroughly as soon as possible upon leaving the exposure area, and always before eating, drinking, using tobacco products, or making contact with other persons.

Comply with all applicable laws and regulations, including occupational health and safety regulations.

Participate in air monitoring, medical examination programs, and health and safety training programs provided by your employer or trade organizations and in accordance with occupational health and safety regulations and recommendations. Consult with physicians experienced in relevant occupational medicine.

Work with your employer and trade organization to reduce dust and fume exposure at the work site and to reduce the risks. Effective health and safety programs, policies and procedures for protecting workers and others against harmful exposure to dust and fumes should be established and implemented based on advice from health and safety experts. Consult with experts.

DANGER Exhaust gas hazard

The exhaust gas from the machine's combustion engine contains carbon monoxide which is poisonous, and chemicals which cause cancer, birth defects, or other reproductive harm. Inhalation of exhaust fumes can cause serious injury, illness, or death.

Never inhale exhaust fumes.

Ensure good ventilation (extraction of air by fan if necessary).

WARNING Projectiles

Failure of the work piece, of accessories, or even of the machine itself may generate high velocity projectiles. During operating, splinters or other particles from the compacted material may become projectiles and cause personal injury by striking the operator or other persons. To reduce these risk:

Use approved personal protective equipment and safety helmet, including impact resistant eye protection with side protection.

Make sure that no unauthorized persons trespass into the working zone.

Keep the work place free from foreign objects.

WARNING Rotating blades hazards

There is a risk of hands and feet getting caught by the rotating blades when the machine is running. This can cause personal injury.

Never place your hands or feet inside the protection ring when the machine is running

WARNING Motions hazards

When using the machine to perform work-related activities, you may experience discomfort in the hands, arms, shoulders, neck, or other parts of the body.

Adopt a comfortable posture whilst maintaining secure footing and avoiding awkward off-balanced postures.

Changing posture during extended tasks may help avoid discomfort and fatigue.

In case of persistent or recurring symptoms, consult a qualified health professional.

WARNING Vibrations hazards

Normal and proper use of the machine exposes the operator to vibration. Regular and frequent exposure to vibration may cause, contribute to, or aggravate injury or disorders to the operator's fingers, hands, wrists, arms, shoulders and/or nerves and blood supply or other bodyparts, including debilitating and/or permanent injuries or disorders that may develop gradually over periods of weeks, months, or years. Such injuries or disorders may include damage to the blood circulatory system, damage to the nervous system, damage to joints, and possibly damage to other body structures.

Operate and maintain the machine as recommended in these instructions, to prevent an unnecessary increase in vibration.

The following may help to reduce exposure to vibration for the operator:

Make sure that the machine is well-maintained and not worn out.

Immediately stop working if the machine suddenly starts to vibrate strongly. Before resuming the work, find and remove the cause of the increased vibrations.

Participate in health surveillance or monitoring, medical exams and training programs offered by your employer and when required by law.

When working in cold conditions wear warm clothing and keep hands warm and dry.

See the "Noise and vibration declaration statement" for the machine, including the declared vibration values. This information can be found on the page 9.

WARNING Trapping hazards

There is a risk of neck ware, hair, gloves, and clothes getting dragged into or caught by rotating machineparts. This may cause choking, scalping, lacerations, or death. To reduce the risk:

Never grab or touch a rotating machine part.

Avoid wearing clothing, neck ware or gloves that may get caught.

Cover long hair with a hair net.

DANGER Electrical hazard

The machine is not electrically insulated. If the machine comes in to contact with electricity, serious injuries or death may result.

Never operate the machine near any electric wire or other source of electricity.

Make sure that there are no concealed wires or other sources of electricity in the working area.

DANGER Concealed object hazard

During operating, concealed wires and pipes constitute a danger that can result in serious injury.

Check the composition of the material before operating.

Watch out for concealed cables and pipes for example electricity, telephone, water, gas, and sewage lines.

If the machine seems to have hit a concealed object, switch off the machine immediately.

Make sure that there is no danger before continuing.

WARNING Involuntary start

Involuntary start of the machine may cause injury.

Keep your hands away from the start and stop device until you are ready to start the machine.

Learn how the machine is switched off in the event of an emergency.

WARNING Noise hazard

High noise levels can cause permanent and disabling hearing loss and other problems such as tinnitus (ringing, buzzing, whistling, or humming in the ears). To reduce risks and prevent an unnecessary increase in noise levels:

Risk assessment of these hazards and implementation of appropriate controls is essential.

Operate and maintain the machine as recommended in these instructions.

If the machine has a silencer, check that it is in place and in good working condition.

Always use hearing protection.

TRANSPORT, PRECAUTIONS**WARNING Loading and unloading hazard**

When the machine is lifted by a crane and similar appliance, this can lead to injury.

Use marked lifting points.

Make sure that all lifting devices are dimensioned for the weight of the machine.

Never remain under or in the immediate vicinity of the machine.

MAINTENANCE, PRECAUTIONS**WARNING Unexpected start hazard**

During maintenance or when changing blades on the machine, there is a risk that the engine backfires or that the machine unexpectedly starts. This applies especially when the engine is hot and if the engine power switch is in position ON. This can result in serious personal injury.

Always let the engine cool down.

Always turn the engine power switch to position OFF.

Always take the cap off the spark plug.

WARNING Unexpected start hazard

Any machine modification may result in bodily injuries to yourself or others.

Never modify the machine. Modified machines are not covered by warranty or product liability.

Always use original parts, insertion tools, and accessories.

Change damaged parts immediately.

Replace worn components in good time.

CAUTION High temperature

The machine's engine exhaust pipe, and bottom become hot during operation. Touching them can lead to burns.

Never touch a hot machine.

Never touch the bottom of the machine when its hot.

Wait until the engine, exhaust pipe, and bottom of the machine have cooled down before carrying out maintenance work.

STORAGE, PRECAUTIONS

Keep the machine in a safe place, out of the reach of children and locked up.

TECHNICAL DATA

To reduce the risk of serious injury or death to your self or others, read the Safety instructions section found on the previous pages of this manual before operating the machine.

TR 600E

Motor Power	1,5 kW
Motor Type.....	230V, 1-phase 50 Hz
Speed, (motor shaft).....	2810 rpm
Speed, (output shaft)	130rpm
Net weight, TR 600E.....	82,8kg
Weight transport wheels.....	2,6kg

Dimensions

Diameter protecting ring.....	600 mm
Working diameter ,blades	581 mm
Outer diameter, disc.....	1740 mm
Length, working position.....	1640 mm
Height, working position.....	980 mm
Height transportation	870 mm
Hand/arm vibrations hav according to ISO 5349 on fresh concrete working as a leveling disc....	1,4 m/s ²
Guaranteed sound-power level, L _{WA}	93 dB(A)
Sound pressure level (at operators ear).....	70 dB(A)

TR 950E

Motor Power	2,5 kW
Motor Type.....	400V, 3-phase
Speed, (motor shaft).....	850-2840 rpm
Speed, (output shaft)	40-133rpm
Inverter drive Power.....	2.5kW
Inverter drive, Type.....	E84DGFCSNNP
Inverter drive, specifkation.....	1/0 modul
Motor and Inverter drive:	
Form of production.....	IP65
Net weight, TR950E.....	83,8kg

Dimensions

Diameter protecting ring.....	950 mm
Working diameter.....	935 mm
Length working position, short handle.....	1976 mm
Length working position, long handle.....	2325 mm
Hand/arm vibrations hav according to ISO 5349 on fresh concrete working as a leveling disc....	1,3 m/s ²
Guaranteed sound-power level, L _{WA}	99 dB(A)
Sound pressure level (at operators ear).....	72 dB(A)

Denomination	Article number
Leveling disc 600 mm	701120
Leveling disc 750 mm	701226
Leveling disc 950 mm	701003

TR 750E

Motor Power	2,5 kW
Motor Type.....	400V, 3-phase
Speed, (motor shaft).....	850-2840 rpm
Speed, (output shaft)	40-133rpm
Inverter drive Power.....	2.5kW
Inverter drive, Type.....	E84DGFCSNNP
Inverter drive, specifkation.....	1/0 modul
Motor and Inverter drive:	
Form of production.....	IP65
Net weight, TR750E.....	82,8kg

Dimensions

Diameter protecting ring.....	750 mm
Working diameter.....	728 mm
Length working position, short handle.....	1740 mm
Length working position, long handle.....	1778 mm
Hand/arm vibrations hav according to ISO 5349 on fresh concrete working as a leveling disc....	1,9 m/s ²
Guaranteed sound-power level, L _{WA}	96 dB(A)
Sound pressure level (at operators ear).....	72 dB(A)

Lubricants	TR600E / TR 750E / TR 950E
Grease, shaft for blade adjustments	Shell Regina Grease 2 or equivalent
Gearbox oil	Synthetic Mobil SHC 634

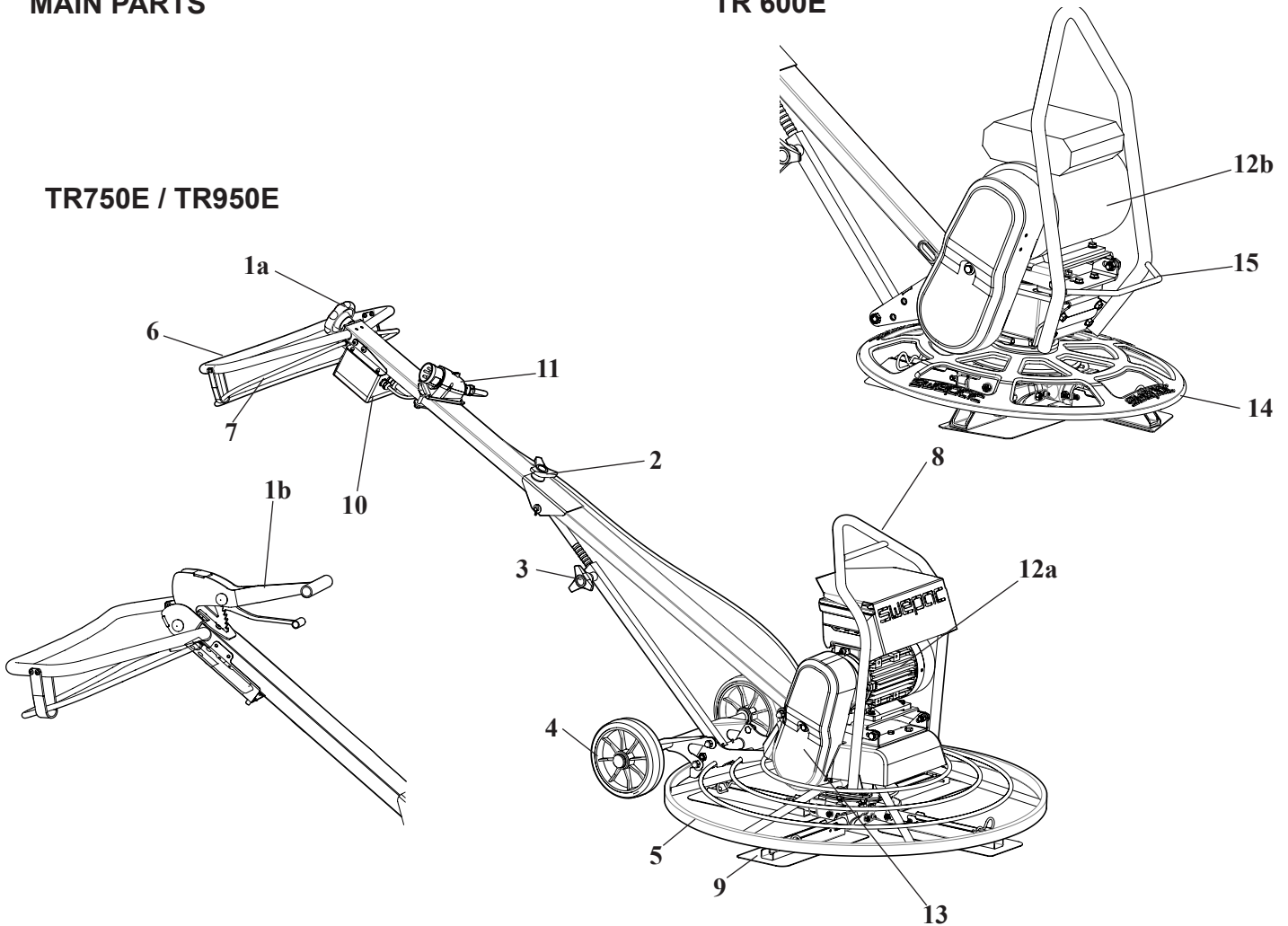
DESCRIPTION

TR 600E; TR 750E and TR 950E are intended to be used for finishing newly cast concrete surfaces. The concrete surface can be power floated with a floating disc and power trowelled with trowelling blades of steel. The surface achieved will be even, dense and have a high finish. No other use is permitted.

MAIN PARTS

TR 600E

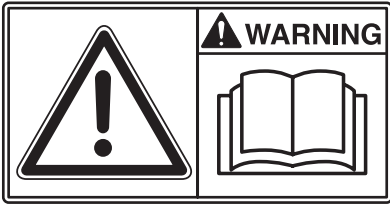
TR750E / TR950E



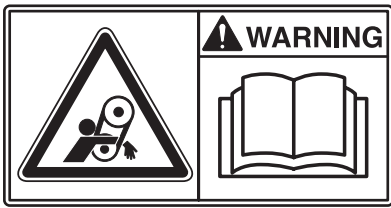
- 1a; Blade adjustments (screw pitch)
- 1b; Blade adjustments (quick pitch)
- 2; Knob for folding (only for long handle)
- 3; Knob for height adjustment
- 4; Transport wheel (option)
- 5; Protection ring
- 6; Operating handle
- 7; Hold-to-run handle (Dead man's grip)
- 8; Lifting eye
- 9; Troweling blade
- 10; Control box with start button and steeples rpm-regulator. (TR600E do not have steeples rpm-regulator)
- 11; Appliance inlet (400V)
- 12a; El. Motor (3-phase)
- 12b; El. Motor (1-phase)
- 13; V-belt transmission
- 14; Rotating ring with rubber O-ring. Protecting walls from marks and scraps. (TR600E)
- 15; Handle for manual lifting

SIGNS

Warning Signs



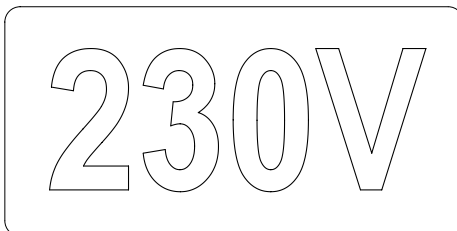
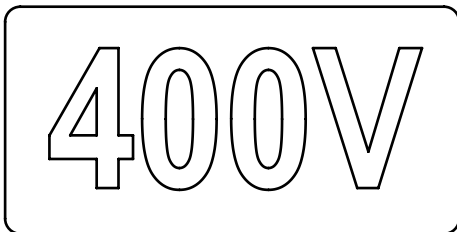
Before use, carefully read the manual and its safety instructions so that you can handle the machine safely. Ensure that the manual is always accessible.



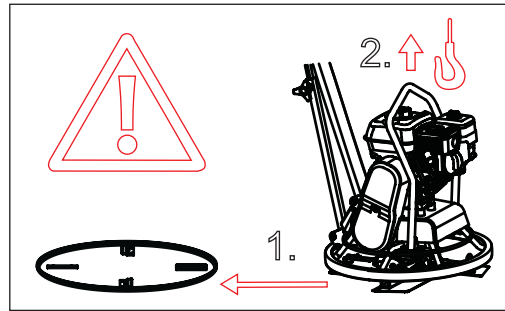
Belt drive: Keep hands, tools and other objects away from the belt drive when the machine is on to avoid injury and damage. See the safety instructions in the manual.



As the sound pressure level at the operator's ears exceeds 80 dB (A), ear protectors must be used when working with the machine to prevent hearing damage.



The stickers show the electrical system voltage supply.

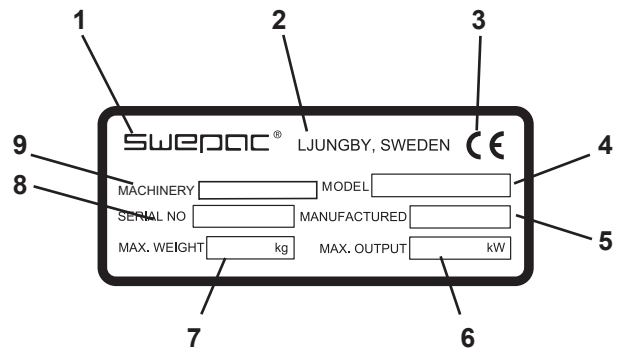


Always remove the leveling disc before lifting the machine!



NOTE! Use only the machine's lifting eye to lift the machine.

Machine Signs



1. Manufacturer
2. Place, country of manufacture.
3. CE mark.
4. Model name.
5. Year of manufacture.
6. Max. engine power.
7. Max. weight.
8. Serial number.
9. Machine type

DESCRIPTIONS MOTOR AND ELECTRIC SYSTEM

TR750E / TR950E

The trowel is powered by a 3-phase 400 V. electric motor, which are driven by an efficiently inverter drive. The motor has an inbuilt thermo protection.

Since the placement of the inverter is above the electric motor and in the same time integrated, the communication in-between they become simple, covered and reliable.

The Inverter is equipped with:

- A large led status display- clearly visible, even under the most challenging conditions.
- A vector steering. It means that it is very strong on low rpm.
- Acceleration 3 seconds
- Inbuilt overload protection for over amps.
- An easy access of a connection for instrument to measure the status and condition of the inverter. The test instrument is an accessory.
- In case of wrong phase flow, the inverter will adjust it automatically.

- The control box in the maneuver handle are placed close, and in front of the operator for easily use and reachability. It includes both the start button and the steeples speed control. There is a magnetic switch inside the box that stops the motor instantly when the dead man's grip is released.
- The cables are mounted inside the handle tubes to protect them well, and without access to mechanical wear and abuse.

TR 600E

The trowel is powered by a 1-phase 230 electric motor.

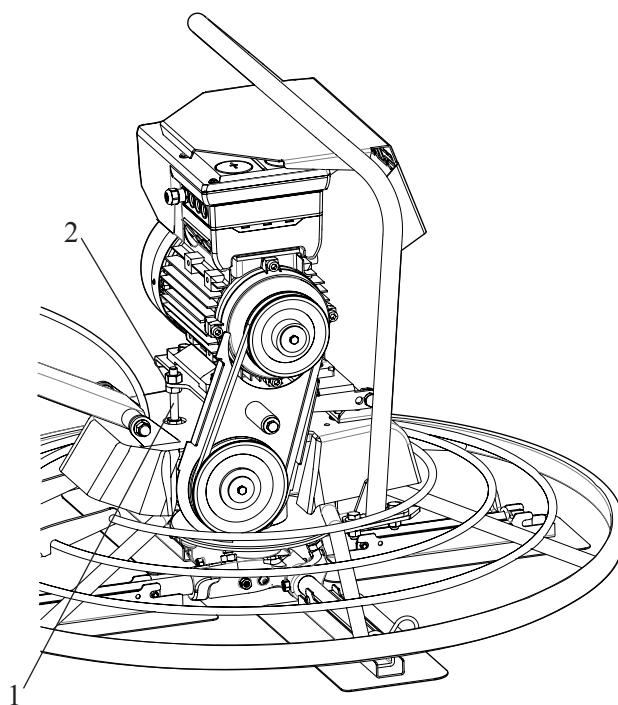
- The control box in the maneuver handle are placed close, and in front of the operator for easily use and reachability. There is a magnetic switch inside the box that stops the motor instantly when the dead man's grip is released.
- The cables are mounted inside the handle tubes to protect them well, and without access to mechanical wear and abuse.

REGULARY CHECKS

V-belt Drive

Check the tension and condition of the V-belt regularly. Replace a damaged V-belt with the new type according to the table below

Machine type	V-belt type
TR 600E	XPA 782
TR 750E	XPA 707
TR 950E	XPA 707



Adjust the tensioning of the V-belt with the screw (pos 1)
Loosen the upper nut and look it carefully after the adjusting (pos 2)
See that the tensioning is proper without too much tensioning which could harm the bearings in a long run.

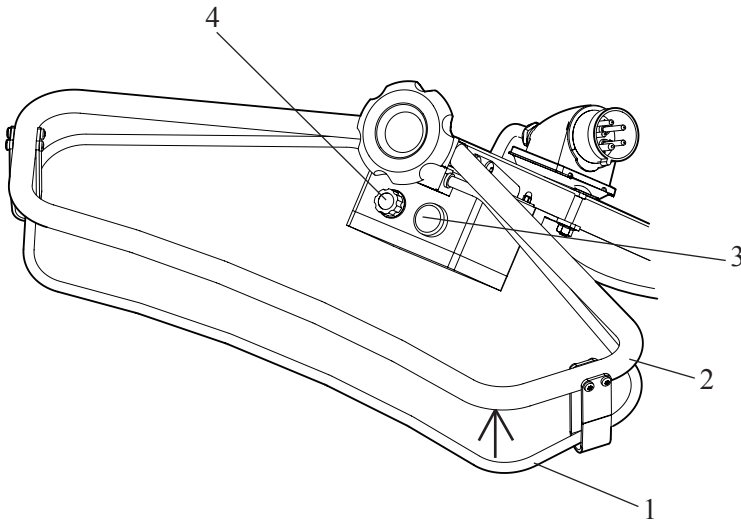
Electric cables and Equipment

Check regularly the cables due to damages or cracks. Check also visually conditions on other electric equipment's to prevent risk for any future failure.

START

TR750E / TR950E

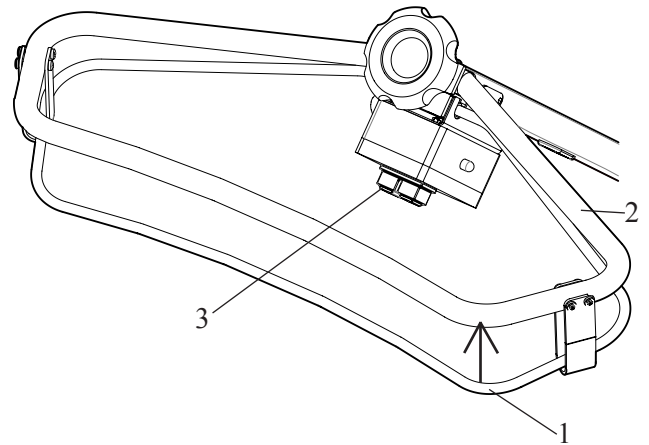
Lift the dead man's grip (1) up against the operating handle (2).
 Hold the trowel prepared for an operating position and push the start button (3).
 Adjust the rpm by turning the knob to the left or right direction depending on required operating rpm (4)



START

TR600E

Lift the dead man's grip (1) up against the operating handle (2).
 Hold the trowel prepared for an operating position and push the start button (3).



STOP

To stop the motor and the rotation of the blades, just release the dead man's grip and it will stop instantly.

STOP

To stop the motor and the rotation of the blades, just release the dead man's grip and it will stop instantly.

OPERATING

NOTICE When using the floating disc, be aware of the position of the blades. All four blades must be inside the brackets on the floating disc. Also check the centre position of the floating disc in relation to the blade cross, to avoid any eccentricity during rotation.

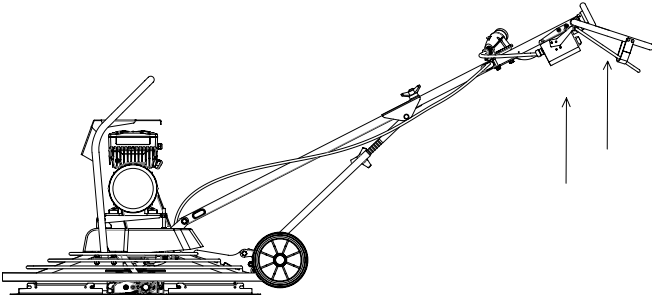
NOTICE Observe the concrete surface for loosened stones during operation. A stone can make marks on the surface. If this appears during the end of the operation, when the concrete surface is hard and close to be finished, the damage can be hard to restore.

Manoeuvring the trowel

The trowel is manoeuvred by applying force on the handle in different directions. The procedure below describes how to move the trowel in different directions, but just as important is the balance and smoothness of the operator to achieve smooth and easy movements of the machine.

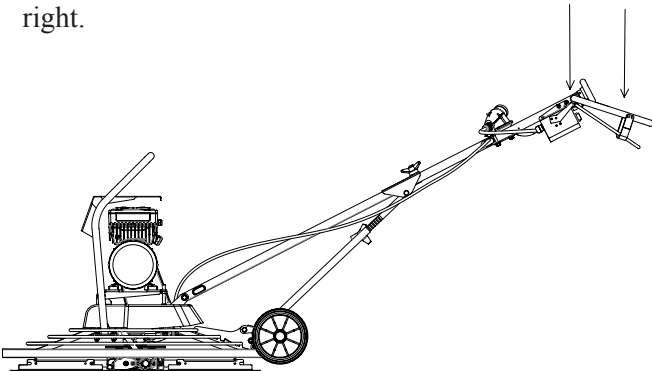
Turn to the left

Lift the handle to turn the trowel to the left.



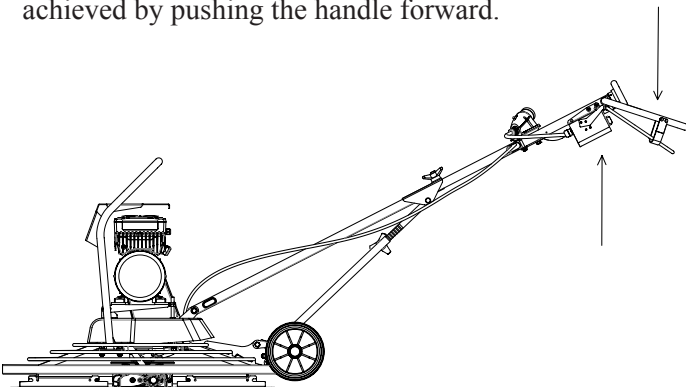
Turn to the right

Press down the handle to turn the trowel to the right.



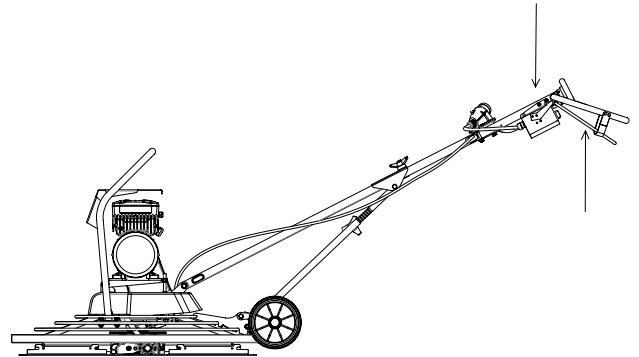
Move forwards

Press down the right side of the handle and lift the left side of the handle in one movement to move the trowel forward. This movement can also be achieved by pushing the handle forward.



Move backwards

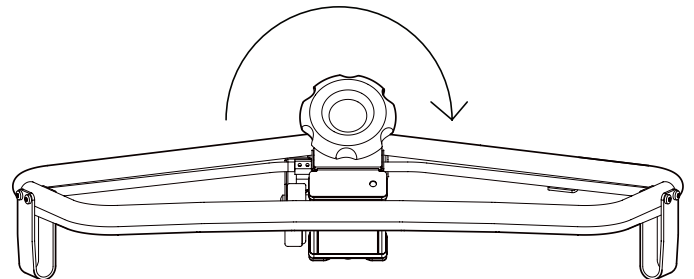
Press down the left side of the handle and lift the right side of the handle in one movement to move the trowel backward. This movement can also be achieved by pulling the handle backward.



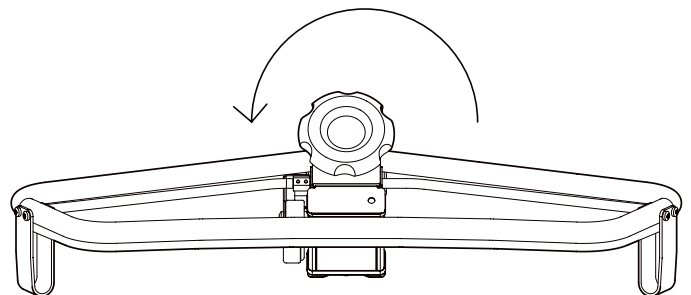
Adjusting the blade angle

The trowel is equipped with a twist pitch knob for stepless adjusting of the blade angle.

To increase the blade angle, turn the twist pitch knob clockwise.



To decrease the blade angle, turn the twist pitch knob counter clockwise.



When taking a break

Stop the machine during breaks.

During all breaks you must put the machine away so there is no risk for unintentional start.

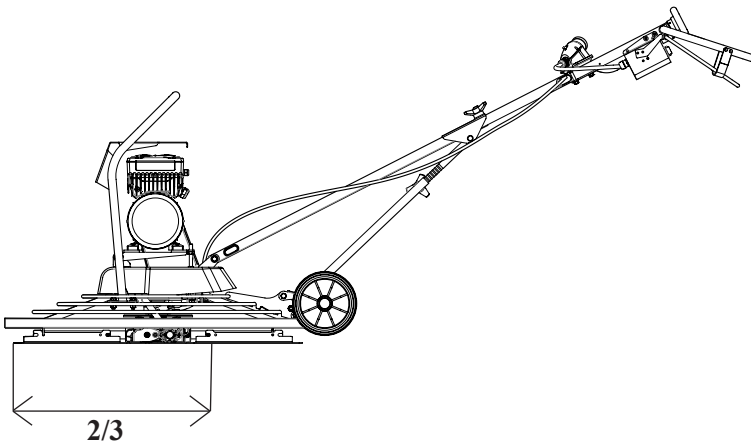
NOTICE When operating the machine, follow the instructions in the manual; never sit or stand on the machine when it is working.

OPERATING NEAR EDGES

WARNING Overturning hazard

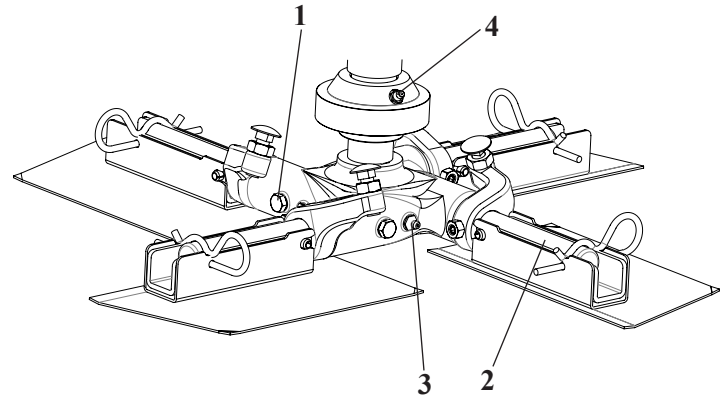
When operating along edges, at least 2/3 of the machine must be on a surface with full bearing strength, otherwise the machine can tip over.

Switch off the machine and lift it back on surface with full bearing strength.



Service and maintenance

1; Loosen the nuts and screws (1) from the blade shafts (2)



2; Pull out the blade shafts (2) from the hub.

3; Clean the contact surfaces on the blade shafts (2) and the hub.

4; Grease the surfaces and assemble the blade shafts (2) again.

5; Bring together the blade shafts (2) and finish the procedure by greasing the nipples (3; 4) until grease is coming out around the blade shafts.

Cleaning the pressure plate

Check the status of the lubrication of the bearings. Use the same grease as for the shafts.

1; Loosen and remove the screw and the washer.

2; Dismount the spider assembly. Use a puller if the blade cross is tight on the shaft.

3; Dismount the pressure plate, ball bearing, slide bush and bearing plate.

4; Clean the surfaces and grease them carefully.

5; Assemble the parts.

NOTICE The gear box of the trowel is lubricated for life. If the oil for some reason has to be changed, use recommended oil quality. See section "Technical data".

Lifting the machine

WARNING Lifting hazard

Never lift the machine without checking if it is intact. A damaged machine can fall apart, which can result in serious injury.

Check that all equipment is dimensioned in accordance with applicable regulations.

Never walk or stand under a lifted machine.

Always remove the leveling disc before lifting the machine!

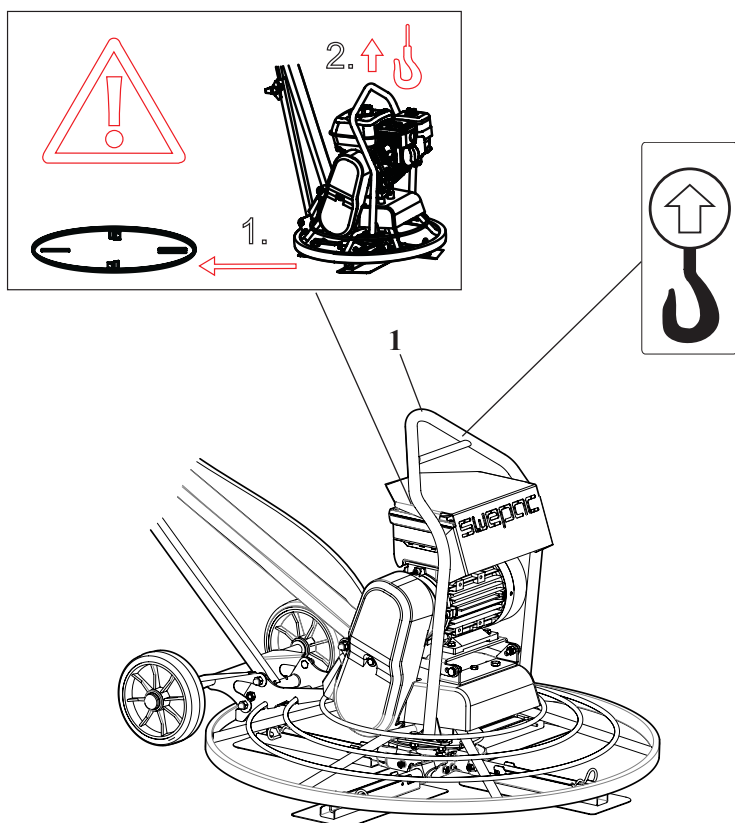
Never use the protection ring as a lifting device.

Never stand near the machine when lifting and transporting.

Check the machine's data plate for weight information.

Lifting the machine

Always use the machine's lifting eye (1) to lift the machine.



Lifting equipment must be dimensioned in order to fulfil all regulations.

TRANSPORTATION

WARNING Transport

During transportation the machine can over turn and cause serious injury.

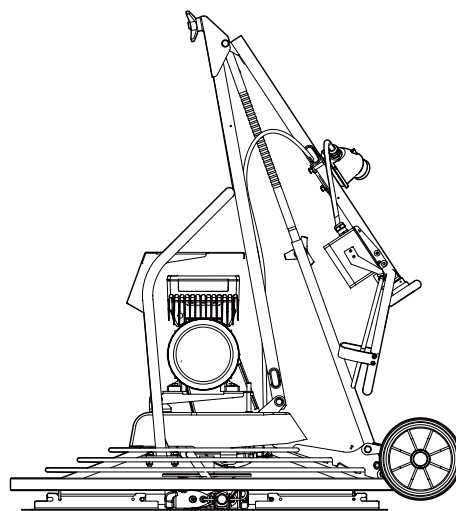
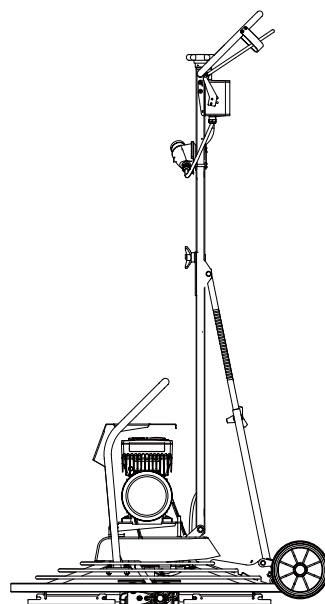
Always strap the machine.

Keep your feet away from the machine.

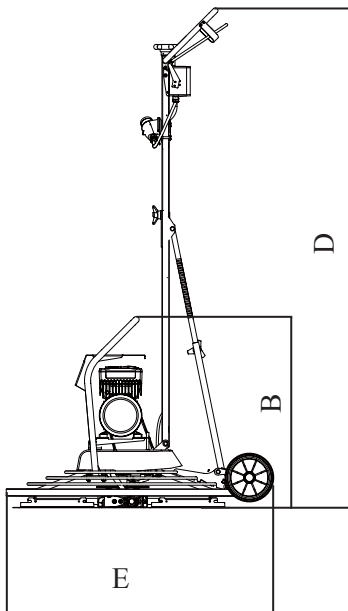
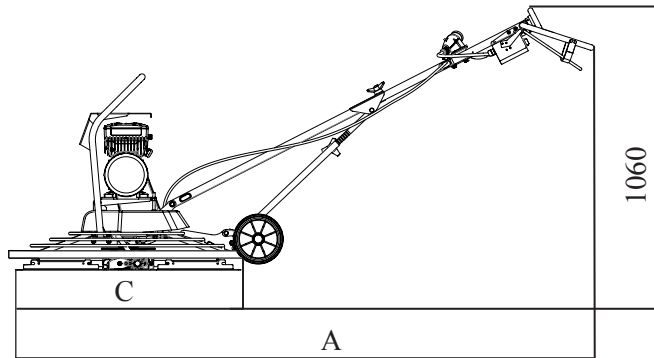
Transporting the machine

Secure the machine for all transportation.

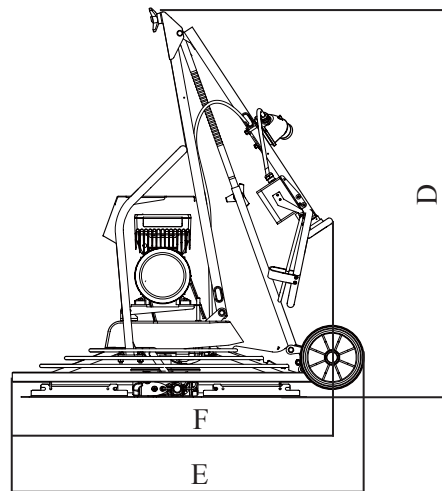
Fold the upper handle to its lowest position during transport.



Dimensions



Rigid handle



Foldable handle

Dimensions

	TR600E	TR750E Rigid / Foldable	TR950E Rigid / Foldable
A	1565	1565	2334
B	783	783	890
C	600	600	955
D	867	867	1215
E	868	868	1095

TROUBLESHOOTING TR 750E / TR 950E

10 Diagnostics & error management

10.2 LED status display

10.2 LED status display

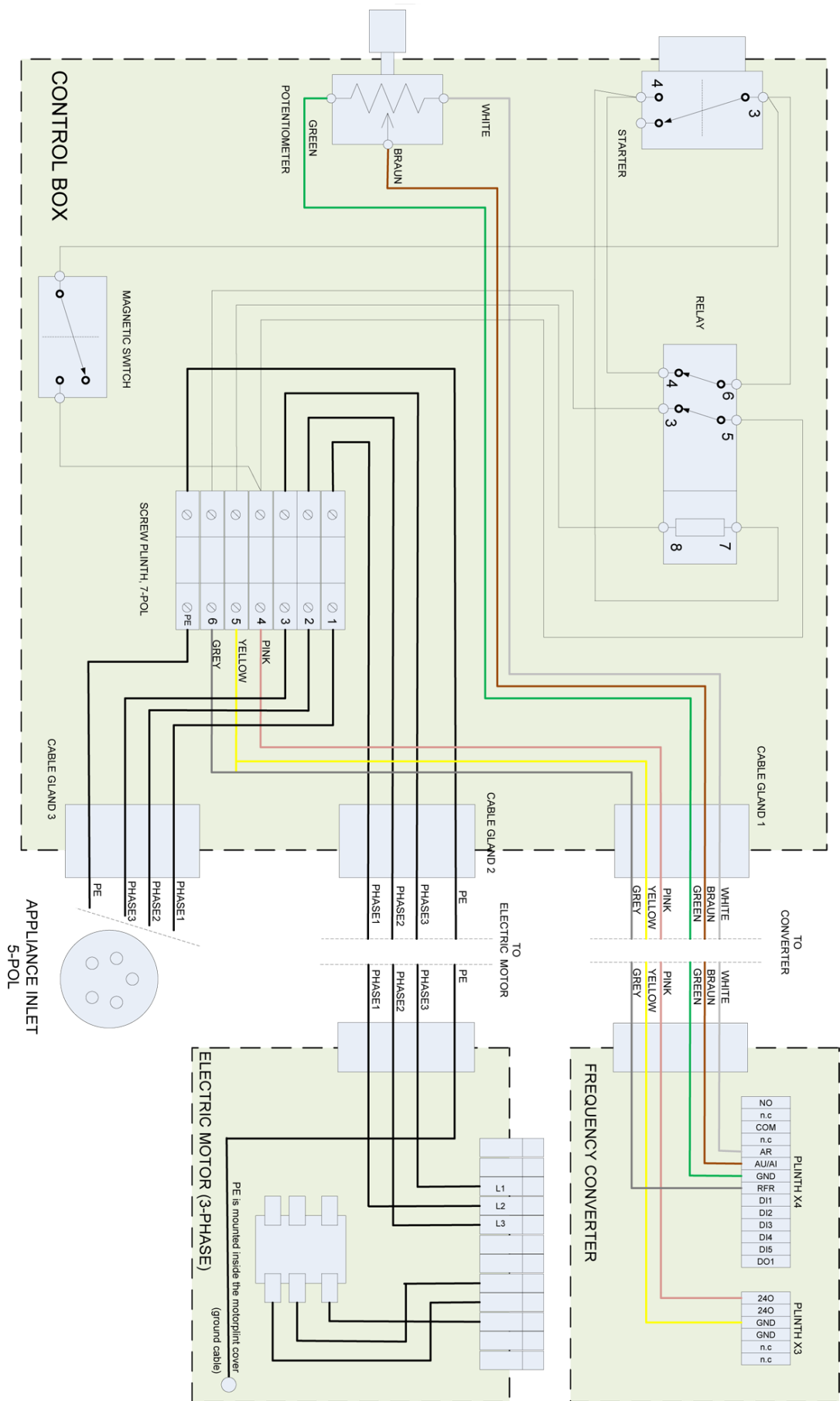


Information on some operating states can be quickly obtained via the two-colored LED display on the top of the device.

The meaning can be seen from the table below.

green "DRIVE READY"	red "DRIVE ERROR"	Description	Device status (Display in C00137)
Off	Off	OFF or initialisation active	Init
	Off	Safe torque off is active	SafeTorqueOff
	Off	Device is ready to start	ReadyToSwitchOn
	Off	Device is switched on	SwitchedOn
	Off	Motor data identification/operation	OperationEnabled
		The controller is ready to switch on, switched on or the operation is enabled and a warning is indicated.	
Off		Trouble is active	Trouble
Off		Fault is active	Fault
Legend			
The symbols used for indicating the LED states have the following meaning:			
	LED is flashing once approx. every 3 seconds (<i>slow flash</i>)		
	LED is flashing once approx. every 1.25 seconds (<i>flash</i>)		
	LED is flashing twice approx. every 1.25 seconds (<i>double flash</i>)		
	LED is blinking every second		
	LED is permanently on		

WIRING DIAGRAM TR 750E / TR 950E



TR 750E / TR 950E

Problem	Cause	Solution
The electric motor on the trowel does not start.	1; The dead man's grip is not in start position 2; There is no electric feed. Control the lamp on the converter. Green flashing confirm if it's ok. 3; Broken Electric components	1; Lift the dead man's grip 2; If not green flashing check the feed cables, or if other color, check the faulty tracing inside the manual and make the necessary measurements. 3; Repair and/or replace necessary parts.
The blades or the working tool do not rotate at all or to slow	1; The V-belt is broken 2; The V-belt is slipping or does not tension against the pulleys	1; Replace the V-belt 2; Adjust the tensioning of the V-belt with the tensioner mechanism.
The blade cross has difficulty to rotate	1; Motor or other electric components faultiness	1; See faulty tracing chart for the converter, or contact Swepac for further support
The trowel is shaking.	1; One or more blades are bent or faulty. 2; One or more blades are not moving in the hub. 3; The pressure plate is askew.	1; Replace the broken units. 2; Disassemble the blades and clean the contact area. Put new grease on all contact areas. 3; Replace the pressure plate.
The blade adjustment system is out of order.	1; The blade adjustment wire is broken. 2; One or more of the blades are not moving in the hub. 3; The pressure plate is not moving vertically. 4; The blade adjustment in the operating handle is faulty.	1; Replace the blade adjustment wire. 2; Disassemble the blades and clean the contact area. Put new grease on all contact areas. 3; Disassemble the blade cross and clean all contact areas. 4; Check all involved parts and replace if necessary.

STORAGE

Clean the machine properly before storage, in order to avoid hazardous substances. See “Dust and fume hazard”

If the machine is stored in the service position, the fuel tank must not be filled more than half full. Otherwise there is a risk that the fuel can come out through the ventilation hole in the fuel tank cap.

Always store the machine in a dry place.

DISPOSAL

A used machine must be treated and disposed in such a way that the greatest possible portion of the material can be recycled and any negative influence on the environment is kept as low as possible, and in accordance with local restrictions.

Before a fuel driven machine is deposited it must be emptied and cleaned of all oil and fuel. Remaining oil and fuel must be dealt with in a way that does not adversely affect the environment.

Always send used filters, drained oil and fuel remnants to environmentally correct disposal.

NOTES

NOTES

NOTES

NOTES



EC-declaration of conformity

Manufacturer

Swepac AB
Blockvägen 3
34132 Ljungby

1. Category: Trowel

2. Type: TR 600E
TR 750E
TR 950E

3. Engine power:

TR 600E.....1,5kW
TR 750E.....2,5kW
TR 950E.....2,5kW

The product complies with the following directives:

2006 / 42 / EG

2000 / 14 / EG

2004 / 108 / EG

EN 500-1

EN 500-4

Technical documentation held by:
Swepac AB, Blockvägen 3 SE-34132 Ljungby
Hans Holmlund / Product Manager

SWEPAC

SWEPAC AB

Address **Blockvägen 3, 341 32 Ljungby, Sweden**, tel. **+46 (0)372-156 00**, fax **+46 (0)372-837 41**, E-mail **mail@swepac.se**
Internet **www.swepac.se**