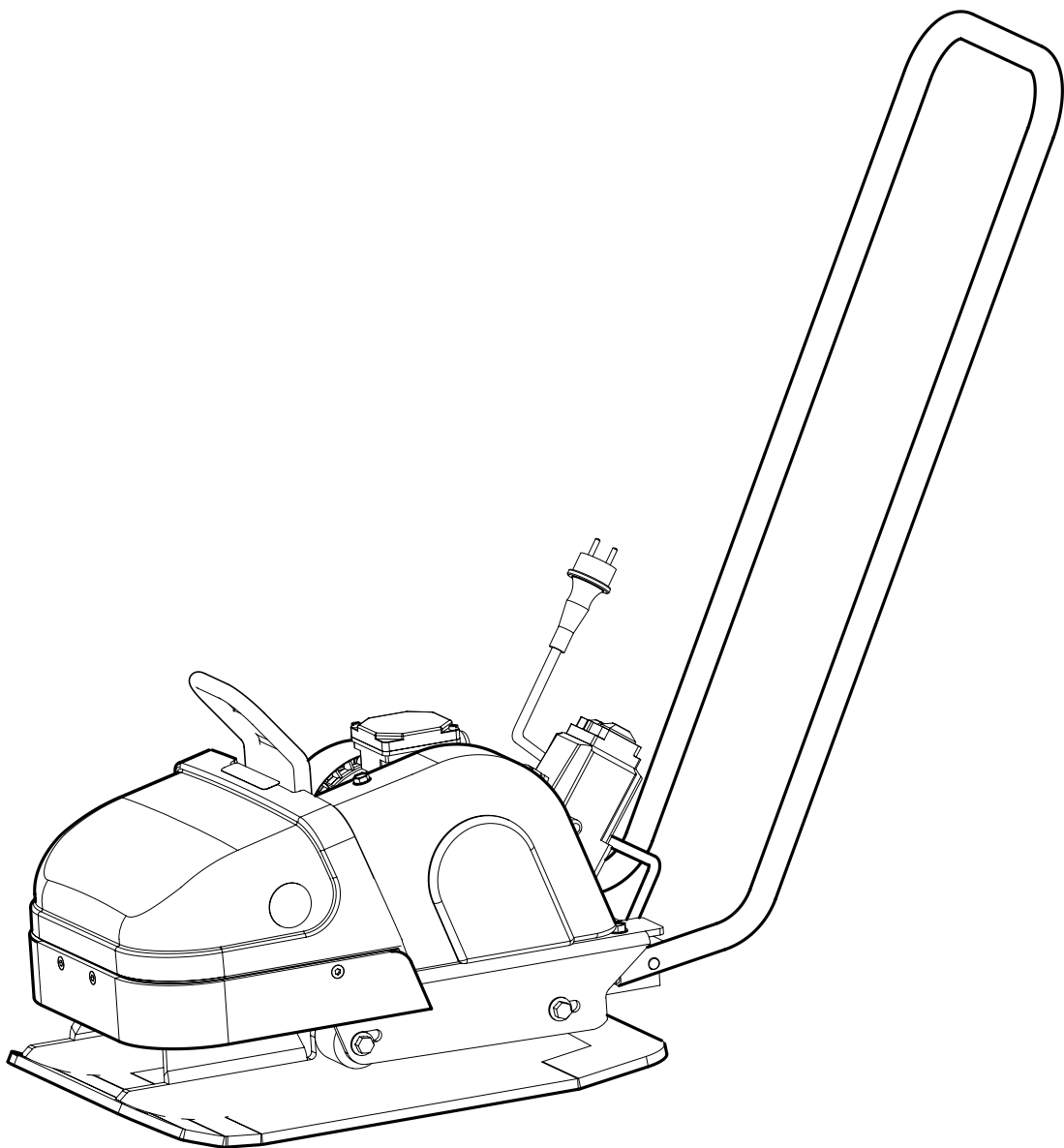


SWEPAC

F75E

USER MANUAL IN ORIGINAL



USE

SWEPAC F75E

is used to pack gravel and sand in connection with minor construction work such as the basis for concrete blocks or paving stones for gardens. The machine's compact design ensures good accessibility in tight spaces.

CONTENTS

USE	3
SAFETY INSTRUCTIONS	4
STANDARDS	4
SIGNS	5
TECHNICAL DATA	6
FUNCTION	6
TECHNICAL DESCRIPTION	6
V-BELT DRIVE	7
POLYURETAN PAD	7
OPERATING INSTRUCTIONS	7
IMPORTANT	7
TRANSPORTATIONS	8
EC-DECLARATION OF CONFORMITY	9

SAFETY INSTRUCTIONS

- Before using the machine, the operator must be informed of the manufacturer's safety instructions and instructions for use.
- The machine is intended for use both indoors and outdoors.
- The machine may not be used if protection and safety devices are not present or not working.
- The operator may not leave the machine unattended when the motor is on.
When the vibrator is connected, the operator must be able to control the movement of the machine using the control handle and the start/stop controls.
The machine may be operated only by a trained operator.
- During maintenance work or other interventions in the machine, the electricity must be disconnected.
- Before lifting the machine, check that the lifting device and its mounting are not damaged and that the rubber dampers on the base plate are undamaged and tightened.
- The operator must use ear protectors when working with the machine.
- The operator must ensure that no unauthorized persons are in the immediate vicinity of the machine.
- Protect yourself from electric shocks. Avoid contact with lightning conductors/metal.
- Never pull the machine by means of the cable and never pull on the cable to disconnect the plug. Keep all cables and extension cables away from water, oil and sharp edges.
- Ensure that the cable does not get caught in fences etc.
- Check that the cable and the extension cable are intact and in good condition. Never use the machine if the cable is damaged, rather put it into an authorised service workshop for repair.
- Never use an extension cable that is rolled up.
- The machine must be connected to an earthed socket.
- Check that the mains voltage corresponds with the rated voltage on the engine's rating plate.
- Ensure that the cable is behind you when you start the machine so that there is no risk of damaging it.

STANDARDS

Noise

Measurement in accordance with the standard EN 500-4 Rev. 1:1998, Annex C:

Measurement uncertainty ± 0.5 dB (A) in 95% of the measurements.

In accordance with the conditions in Directive 2000/14/EC, Annex VI, the following values are reported:

Sound pressure level at the operator's ears, L_{pA}	90 dB (A)
Permitted sound power level, L_{WA}	105 dB (A)
Guaranteed sound power level, L_{WA}	103 dB (A)

As the sound pressure level at the operator's ears exceeds 80 dB (A), ear protectors must be used during operation!

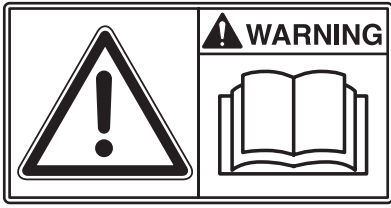
Hand/arm vibrations

The vibration acceleration was measured in accordance with the ISO 5349 standard during operation on a graveled surface. The measurement values were translated into the maximum daily exposure time for regular usage. For additional information about vibrations, please confer the regulation AFS 2005:15 from the Swedish Work Environment Authority, effective July 1st 2005. Measurement uncertainty ± 0.3 m/s² in 95% of the measurements

Hand/arm-vibrations, m/s ²	4,6
The maximum daily exposure time	2,4 h

SIGNS

Warning signs



Before use, carefully read the manual and its safety instructions so that you can handle the machine safely. Ensure that the manual is always accessible.

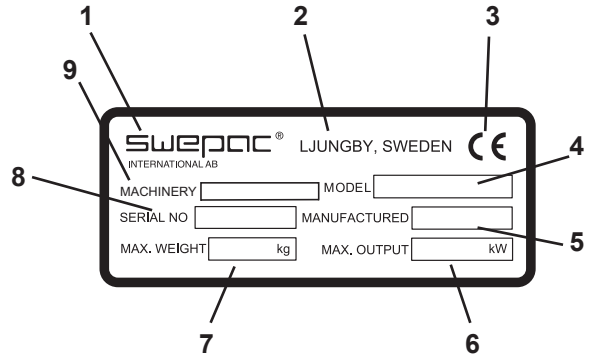


Belt drive: Keep hands, tools and other objects away from the belt drive when the machine is on to avoid injury and damage. See the safety instructions in the manual.



As the sound pressure level at the operator's ears exceeds 80 dB (A), ear protectors must be used when working with the machine to prevent hearing damage.

Machine Signs



1. Manufacturer
2. Place, country of manufacture.
3. CE mark.
4. Model name.
5. Year of manufacture.
6. Max. engine power.
7. Max. weight.
8. Serial number.
9. Machine type

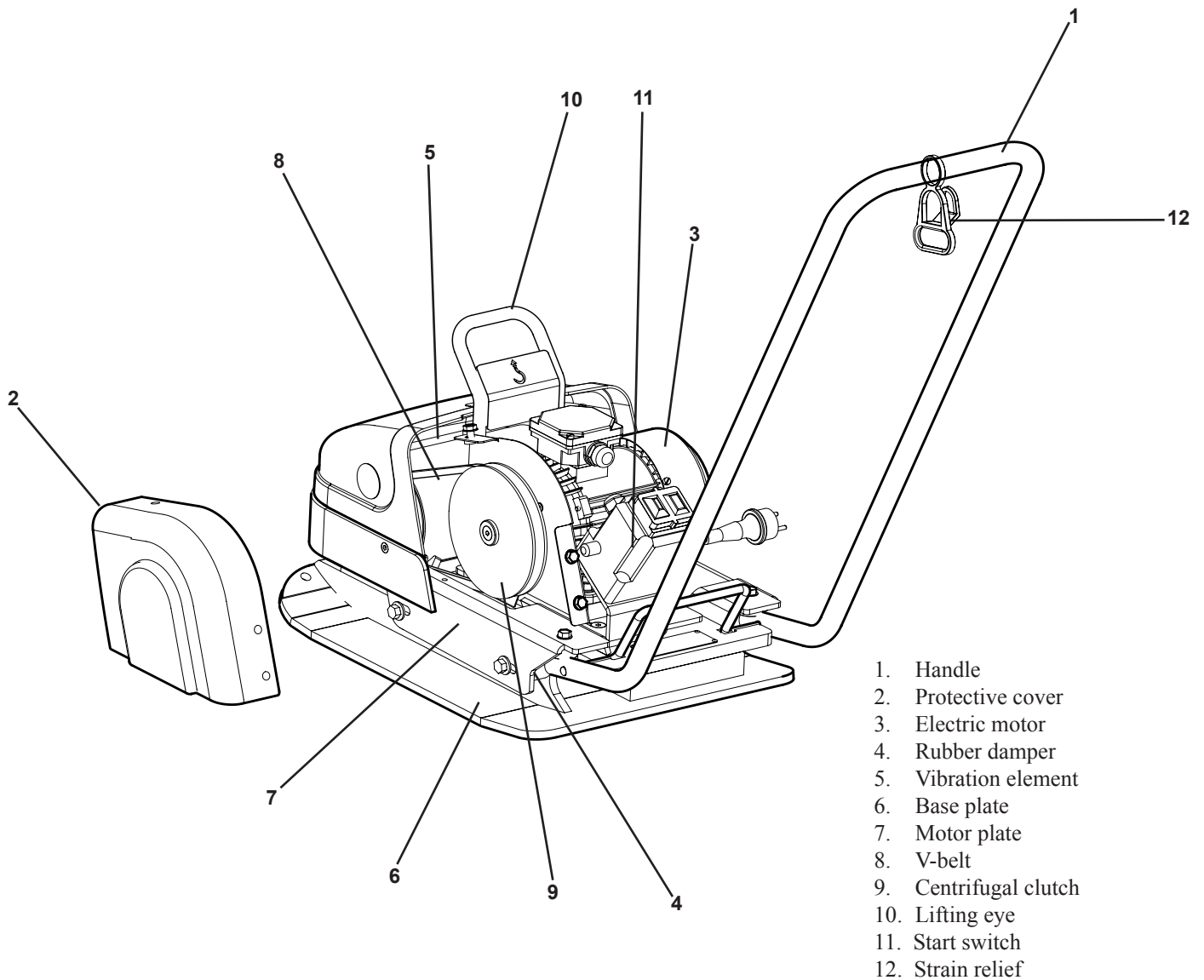
TECHNICAL DATA

F75E

Net weight.....	75 kg
Base plate, w x l.....	380 x 530 mm
Speed.....	appr 25 m/min
Centrifugal force.....	11 kN
Vibration frequency.....	88 Hz
Drive motor.....	Electric
Motor power.....	1,1 kW
Motor RPM.....	2810 r/min
Rated current.....	6,45A
Voltage.....	230V 1-phase

FUNCTION

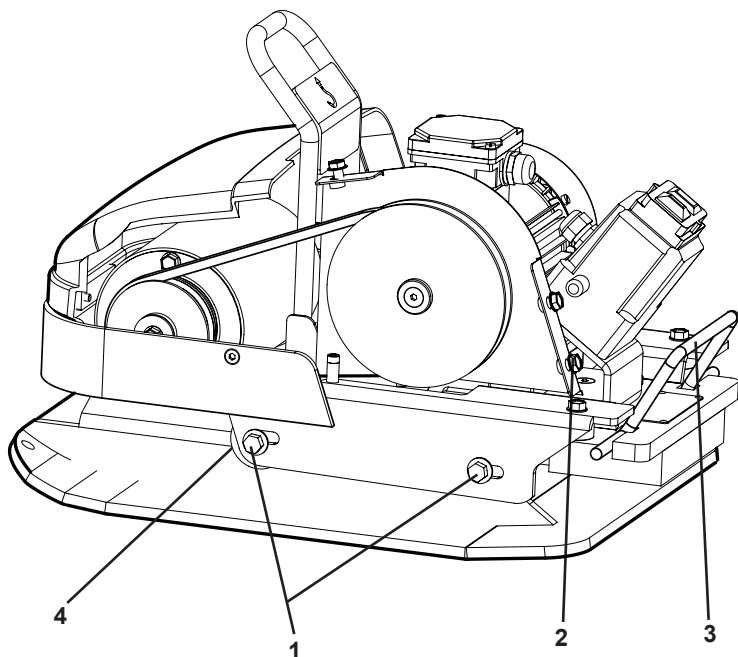
The machine consists of a base plate with a vibration element and an upper part cushioned from the base plate. The power is transmitted from the petrol engine to the vibration element via a V-belt. The engine is fitted with an integrated centrifugal clutch. On account of the direction of rotation and the position of the vibration element at the front end of the base plate, the vibrator moves forward under its own power. The moving parts are well protected by a cover made of impact resistant polythene.



TECHNICAL DESCRIPTION

V-belt Drive

Check the tension and condition of the V-belt regularly.
Replace a damaged V-belt with the new type A30.



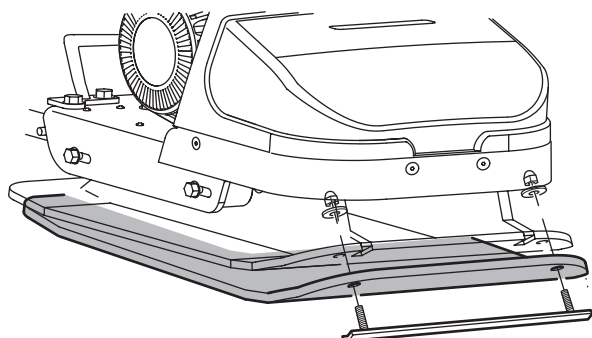
Adjustment of V-belt tension

Loosen the screws (1, 4 pcs) that hold the engine plate.
Loosen the screws (2, 3 pcs) holding the cover.
Remove the cover.

Tension the V-belt by pulling the handle (3).
Tighten the screws.
Refit the cover.

Rubber Dampers

Check the condition of the rubber dampers (4, 4 pcs) regularly. Replace damaged dampers.

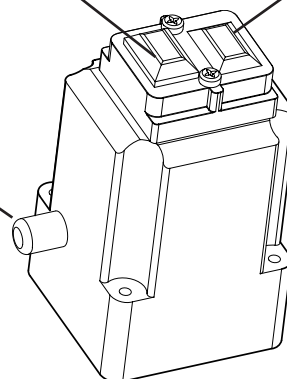


Polyuretan Pad

A polyuretan pad is used for stone paving work to protect against stones and ground clinker.

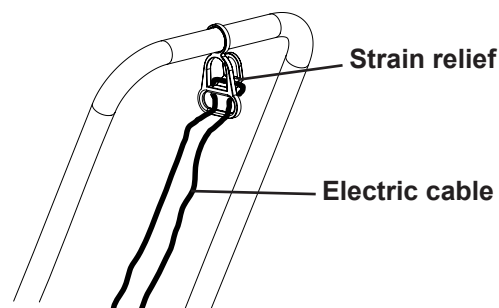
Stopp button (red) Start button (red)

Circuit breaker



OPERATING INSTRUCTIONS

The machine's vibration element is started by means of the green start button on the start switch. Thanks to its compact design and low weight, the machine's is very easy to manoeuvre. The design of the base plate allows the machine to be pulled backwards without disturbing the packed surface. The machine's vibration element stops when the red stop button on the start switch is pressed. The machine is intended for use both indoors and outdoors. Work with the machine in daylight or other adequate lighting. Ballast must be wetted or naturally damp. When operating the machine secure the electric cable in the strain relief as in the illustration below. All other use is discouraged.



IMPORTANT

It is important to consider the following when using Swepac F75E in single phase version.

In some adverse cases, the machine can consume so much power in the moment of starting that the circuit breaker is triggered. Wait 1 minute before resetting. Low voltage supply to the machine can lead to inferior performance (lower rotation speed and torque).

Among other things, low voltage to the machine can be due to:

- Low incoming voltage (under 230V)
- Use of cables that are too delicate (at least 2.5 sq mm conductors are recommended).
- Use of a cable that is longer than 20 m.

TRANSPORTATION

It is easy to remove the handle without tools, and the boot of a standard car is sufficient to transport the machine.

Lifting by hand

Remove the handle by tilting it forward and pulling the shafts apart.

Move the handle from side to side so that the dowels let go.

Caution! The machine must be lifted by 2 persons!

Lift by means of the handle on the back and the front edge of the machine.

Lifting with crane

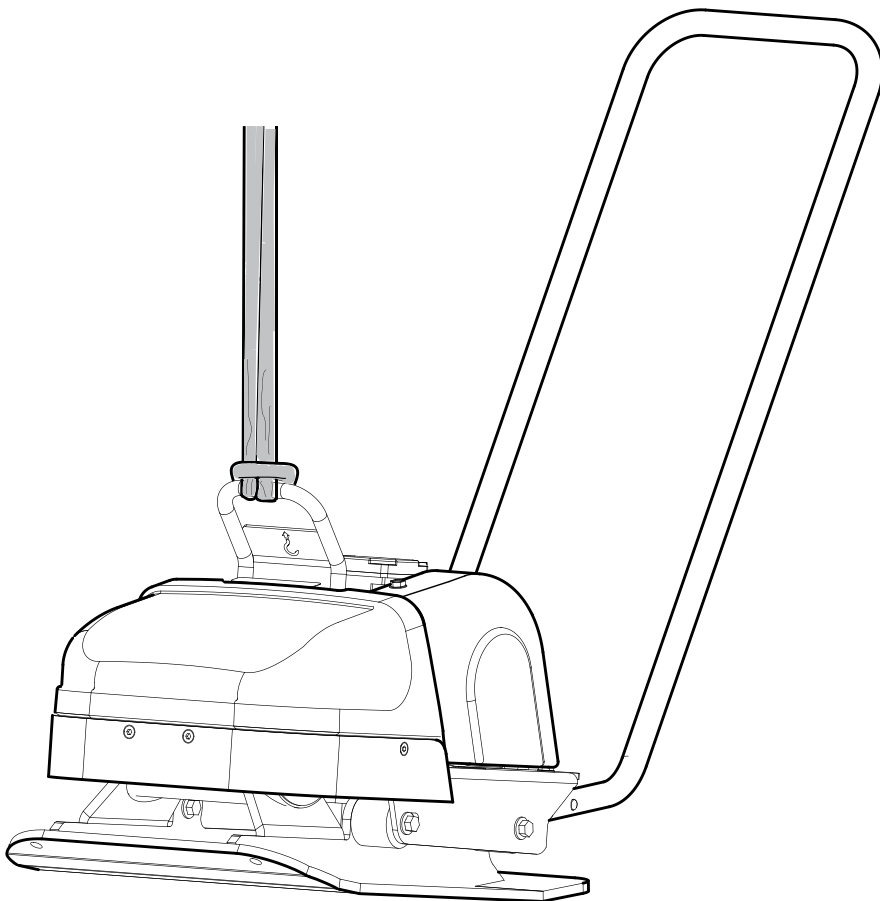
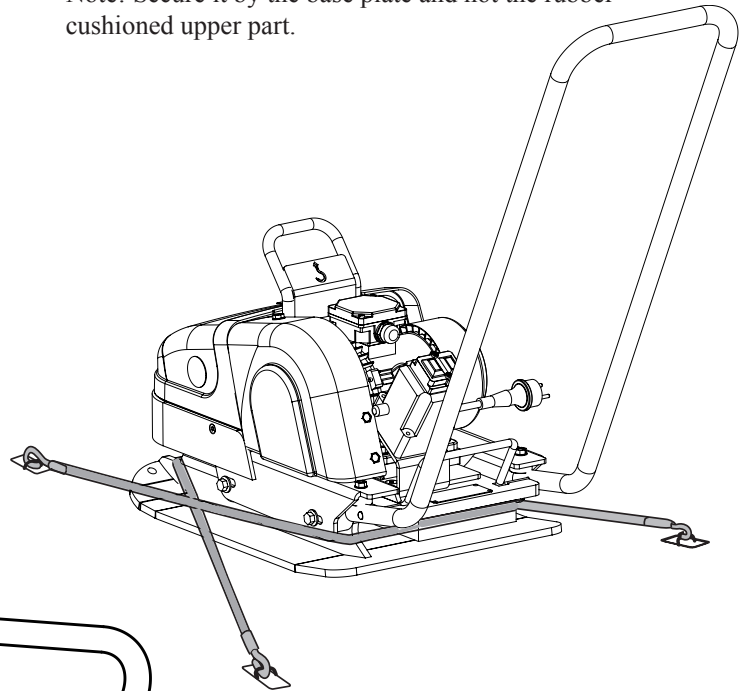
Tilt the handle forward.

Fit a lifting sling to the lifting eye and thread the lifting sling between the shafts of the handle, see illustration below.

Transport locking

Secure the machine with straps according to illustration during transportation

Note! Secure it by the base plate and not the rubber-cushioned upper part.





EC-declaration of conformity

Manufacturer

Swepac AB
Blockvägen 3
34132 Ljungby

1. Category: Vibratory plate

2. Type: F75E

3. Motor power: 1,1kW

The product complies with the following directives:

2006 / 42 / EG

2004 / 14 / EG

2000 / 108 / EG

EN500-1

EN500-4

2006 / 95 / EG

Technical documentation held by:

Swepac AB, Blockvägen 3 34132 Ljungby SE
Tomas Johansson / Product Engineer

SWEPAC

SWEPAC AB

Address **Blockvägen 3, 341 32 Ljungby, Sweden**, tel. +46 (0)372-156 00, fax +46 (0)372-837 41, E-mail mail@swepac.se,
Internet www.swepac.se